



AMERICAN SPECIALTIES, INC.

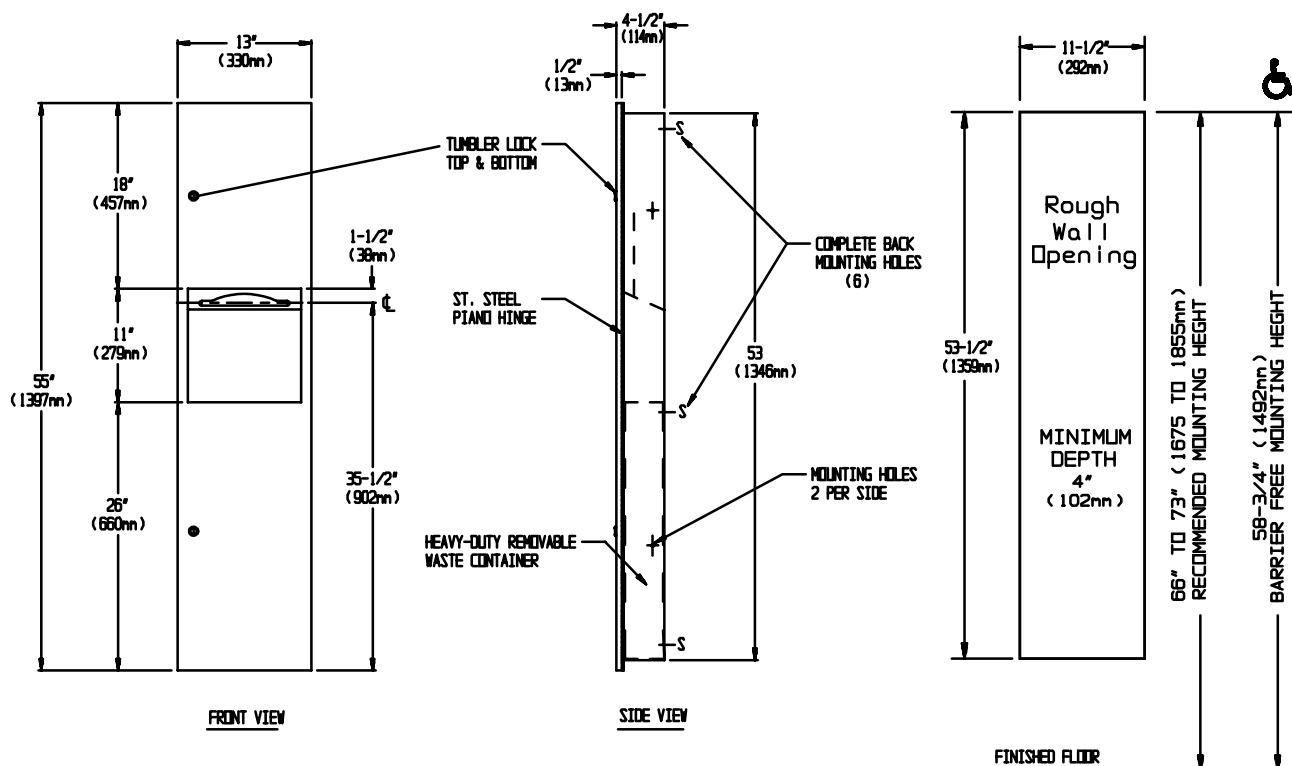
441 Saw Mill River Road, Yonkers, NY 10701 (914) 476-9000

MODEL No: **6467**

ISSUED: 1-87

REVISED: 4-03

RECESSED PAPER TOWEL DISPENSER AND WASTE RECEPTACLE



SPECIFICATION

Recessed Paper Towel Dispenser and Waste Receptacle shall hold and dispense 800 standard multi-fold or 600 standard C-fold paper towels, and shall have a waste capacity of 5 gal. (18.9liters). Cabinet, door, dispenser, and waste receptacle shall be fabricated of alloy 18-8 stainless steel, type 304. Cabinet shall be N° 20 gauge with a 1" (25mm) wide perimeter trim to lay flush against wall and shall have no exposed fastening devices or visible seams. All exposed surfaces shall have a N°4 satin finish and shall be protected during shipment by a PVC film easily removable after installation. Full face door shall be N°18 gauge, fabricated from one piece with no mitres or seams on face and shall have a 1/2" (13mm) square return to the wall. Door shall be attached to cabinet body with a full length 3/16" (5mm) dia. stainless steel multi-staked piano hinge and shall be held closed with two (2) tumbler locks keyed alike to other ASI washroom equipment. Towel dispensing slot shall have a full deburred edge for snag free dispensing and user safety. Dispensing mechanism shall include an adapter that permits the use of multi-fold and C-fold towels. Waste receptacle shall have a rolled edge finger hole for easy servicing.

Recessed Paper Towel Dispenser and Waste Receptacle shall be Model N°6467 as manufactured by American Specialties, Inc., 441 Saw Mill River Road, Yonkers, New York 10701-4913

INSTALLATION

Unit is mounted in wall recess with N°10 self-tapping screws (by others) through concealed mounting holes provided. Note that top of rough wall opening is 3/4" (19mm) below top of unit.

Rough Wall Opening required is..... 11-1/2"W x 53-1/2"H x 4"D. minimum (292mm x 1359mm x 102mm).

OPERATION

Towels are self feeding until supply is depleted. Unit will continue to feed properly when reloaded with a partial load in place. Waste receptacle is emptied manually on a cycle determined by maintenance needs. Locked compartment prevents unauthorized access or removal.